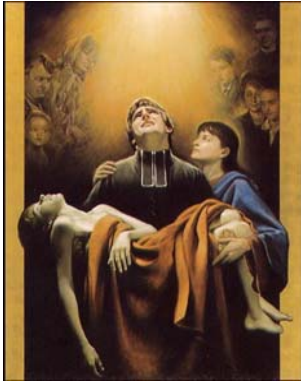


About Jean-Baptiste Montagne

St Marcellin Champagnat established the Marist Brothers on 2 January 1817 after a pivotal encounter with Jean-Baptiste Montagne.

The Montagne family lived in the hamlet of Les Palais, a half kilometre or so from the nearby town of Le Bessat which is located on a lower ridge of Mount Pilat in the Lyon region of Southern France. Jean Baptiste was entirely lacking in matters of religion and the Catholic faith. Marcellin instructed him, heard his confession, and prepared him for death. He then left to visit another sick person in the area. When he returned to the Montagne household, the young priest learned that Jean Baptiste had died.

Marcellin's encounter with this adolescent boy transformed him.



Jean Baptiste's lack of knowledge about Jesus convinced him to found a congregation of Brothers to evangelise the young, particularly the most neglected.

Marist Brothers and their lay partners around the world have taken this story of Marcellin and Jean

Baptiste to their hearts. In it they find the inspiration to follow the Founder in searching for the "Montagnes of Today" to ensure that the needs of everyone they encounter in their ministry are being met.

Examples of in-school activities

First Aid Certificate attainment

**Certificate 1 Business/
Work Preparation**

**My Place Program
- work preparation skills -**

**Keys for Life Program
- driver education and 'L' Plates -**

**Individualized workplace
literacy program**

**Individualized workplace
numeracy program**

Bunnings construction projects

ICT skills development

**Training in voting and other
citizenship responsibilities**



NEWMAN COLLEGE

Educating in the Marist Tradition



JBM Program



What is it?

The JBM program is an innovative approach developed by Newman College to meet the specific needs of those students at the College who may lack interest in the school curriculum and/or who may be lacking in motivation, direction or success.

It is a year long program, during which students will participate in activities that prepare them for a successful transition to TAFE or an apprenticeship/traineeship and is based both at school and in the workplace.

Features

- **Purpose-built classroom**
- **Low teacher: student ratio**
- **One teacher for the 3 day in-school program**
- **Individualised programs suited to student ability**
- **Access to community based programs and facilities**
- **Flexibility to allow for individual student needs**
- **Greater communication and feedback between teacher and parents/guardians**

A transition program

The JBM Program is a 12 month transition program for Year 11 Newman College students. It is best suited to students who:

- Lack motivation, direction or success
- Prefer learning by doing
- Want to leave school but would benefit from another year at school to mature and develop workplace skills
- Are keen to fast track their career
- Need individualised literacy and numeracy programs
- Want a combination of school and the workplace/TAFE
- Have a learning difficulty
- Need to clarify their career pathway
- Want to improve their chances of successful transition to TAFE, employment, an apprenticeship or traineeship



JBM Program structure

The JBM Program is based both at school and in the workplace/TAFE.

The 3 day in-school program

This includes:

- Workplace literacy
- Workplace numeracy
- Personal & Life skills (First Aid, conflict resolution, communication skills, interview and job search skills, independent living etc)
- Religious Education
- Physical Education
- Mentoring Program
- ICT

The 2 day out-of-school program

This involves participation in the School Apprenticeship Link (SAL):

- One day in the workplace;
Students elect an industry and over the year, will spend time in the workplace trying a variety of occupations associated with that industry.
- One day at TAFE;
Students will work towards a relevant certificate e.g. Certificate I General Construction.